

1 General theatre Groundplan  
Scale: 1/8" = 1'-0"

Table of Contents:

Title	Page
CPAC Overview	P. 1
Level 100 Plan View	P. 2
Backstage - Stage - House - Booth - Lobby (300 Level) Plan View	P. 3
Backstage - Stage - House - Booth - Lobby (300 Level) Section	P. 4
Stage + Fixit Shop Plan View / FOH Level 200 Plan View	P. 5
Seating Map	P. 6
Lineset Plan + Shop/Meals Room	P. 7
Lineset Section	P. 8

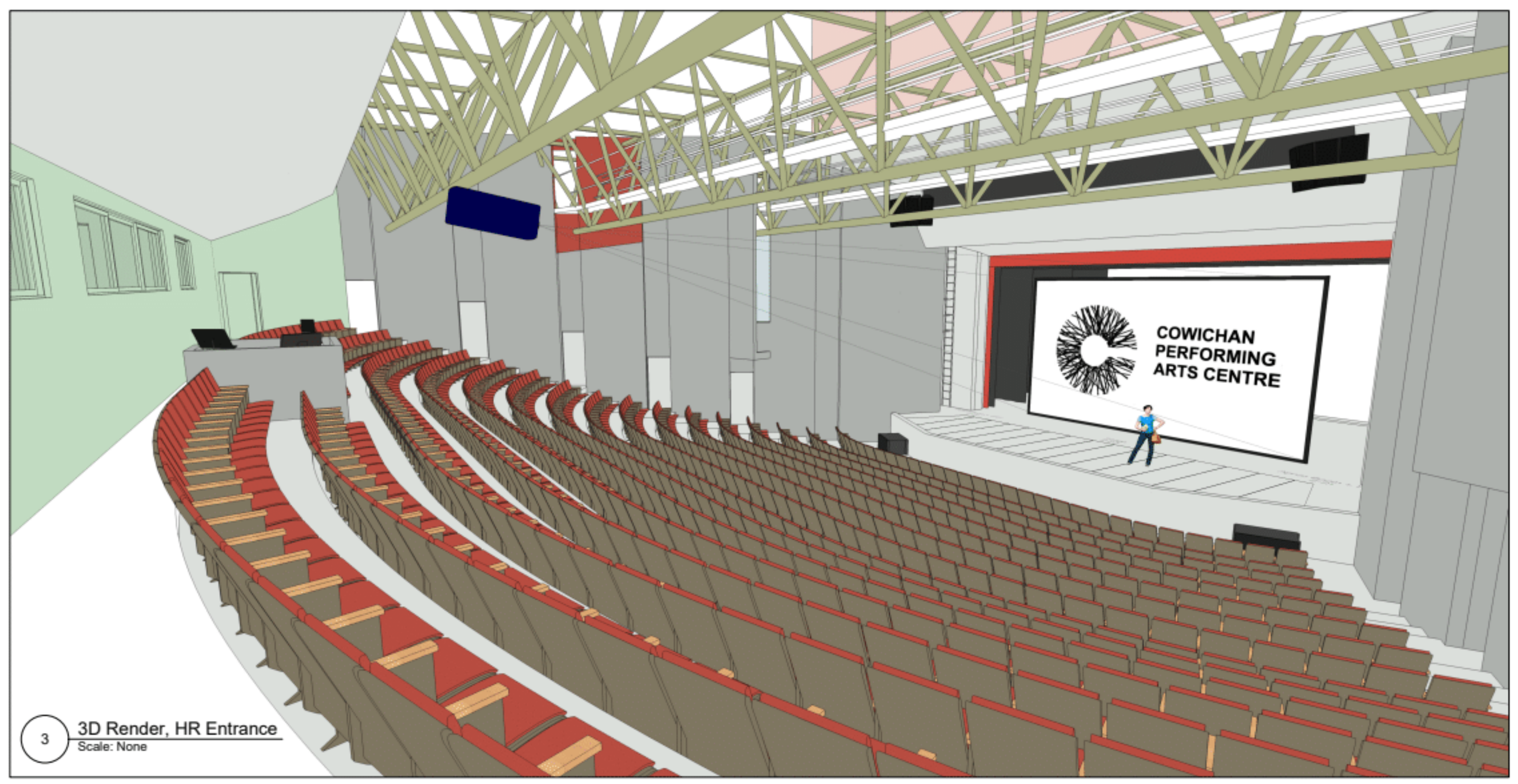
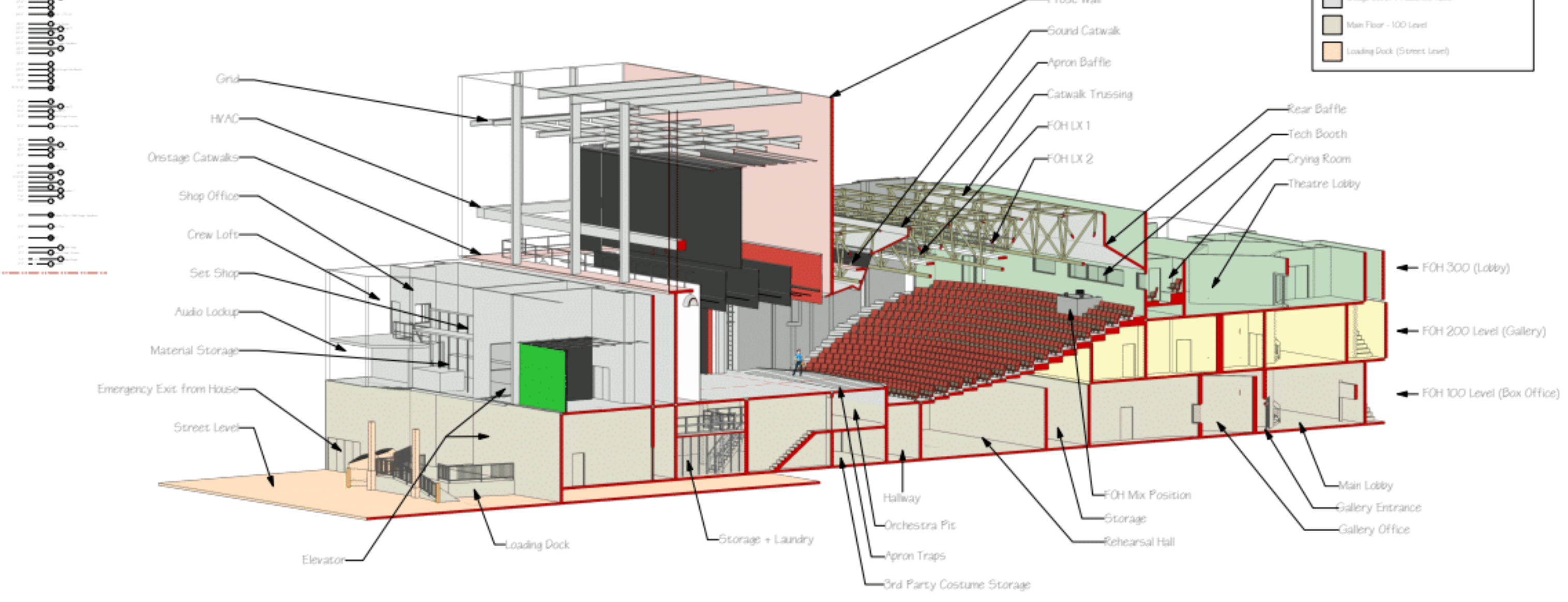
Circuit Maps:

Backstage, Deck, House, Lobby (300 Level)	P. 1
Overhead, Catwalks, Grid	P. 2

Other Documentation:

Lighting + Video Plan/Section	
Administration Offices (200 Level)	
Lineset Schedule x	
Lobby Plan (300 Level)	

2 Theatre Cross Section  
Scale: None



3 3D Render, HR Entrance  
Scale: None

Persons of Interest:

Name:	Title:	Phone:	E-mail:
Roland Simmons	Technical Director	250.746.3427	roland.simmons@cvrd.bc.ca
David Barton	Assistant Technical Director: Main Crew Chief		davebarton@cvrd.bc.ca
Dan Peellow	Assistant Technical Director: Lighting		dan.peellow@cvrd.bc.ca
Richard Nott	Assistant Technical Director: Sound Engineer		richardnott@cvrd.bc.ca

<p><b>COWICHAN PERFORMING ARTS CENTRE</b></p>	<p>Show: <b>House Hang</b> by n/a Director: n/a</p>	<p><b>Cowichan Performing Arts Centre</b> 123 St. James St. Victoria, BC V8W 2E2 +1 250 746 2722</p>	Date: 2022-09-09	Version: 1.0
	<p>Produced by: <b>- No Company -</b> 123 St. James St. Victoria, BC V8W 2E2 (250) 746 2722</p>	<p>Credits: Set: n/a LX: n/a TD: R. Simmons CAD: N. Timmenga</p>	<p>Scale: See Scale</p>	Page: 1 of 8
<p>CPAC Theatre Overview</p>				

All work shall conform to the general conditions of the Cowichan Performing Arts Centre standards and specifications.